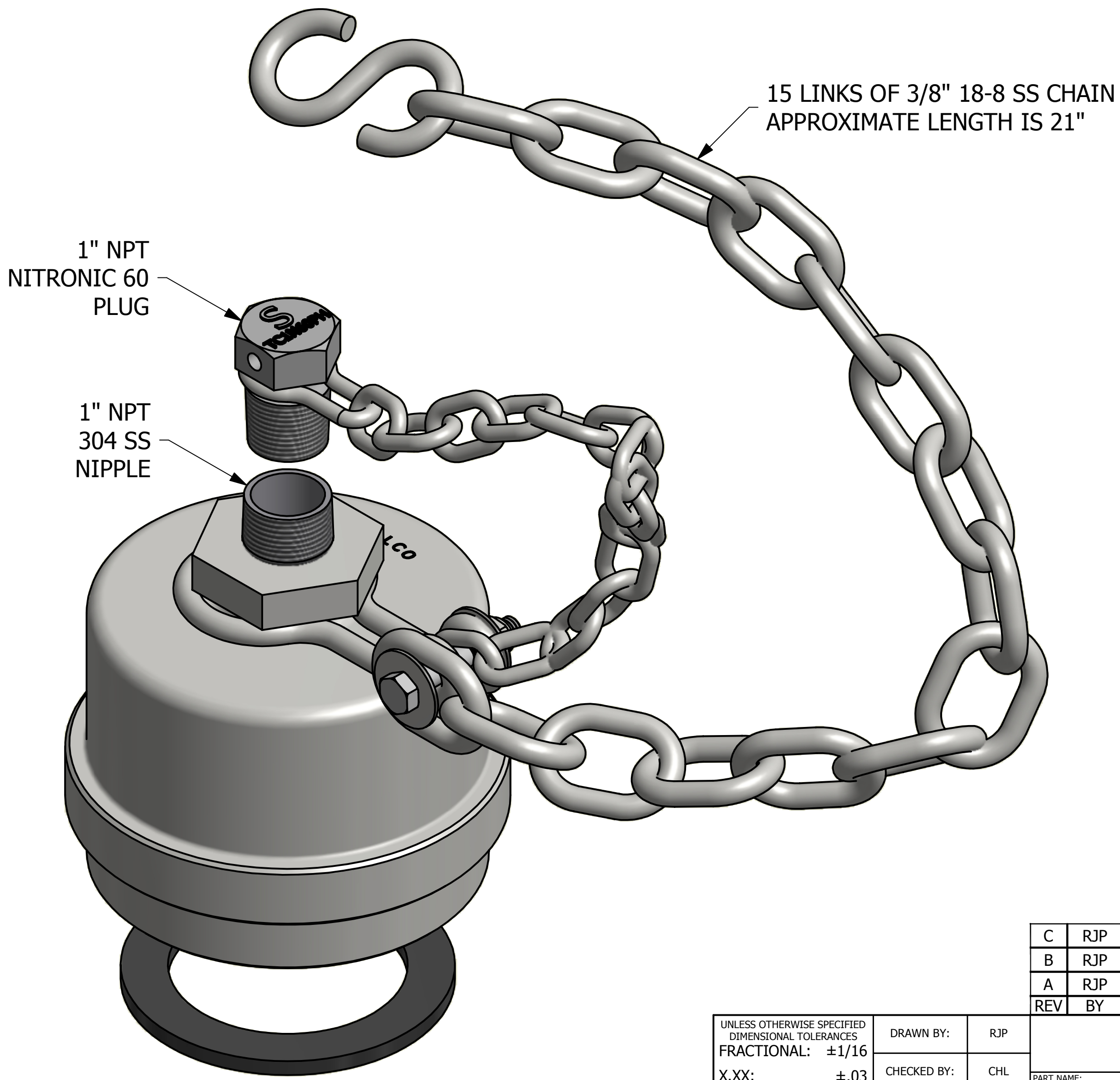


NOTES:

1. THIS ASSEMBLY IS AAR AND DOT APPROVED.
2. THREADS ARE 5 1/4"-4 UN-2B.
3. AAR APPROVAL # E-149523.
4. GASKET MATERIAL IS SULFUR-CURED BLACK EPDM.



SALES DRAWING SALES DRAWING

SALES DRAWING SALES DRAWING

REV	BY	DATE	DESCRIPTION
C	RJP	5-17-16	ADDED AAR #, UPDATED TE4S416DC GEOMETRY
B	RJP	6-18-14	RP103MS TO VPHC20BS
A	RJP	10-15-13	RELEASED FOR PRODUCTION

<small>UNLESS OTHERWISE SPECIFIED DIMENSIONAL TOLERANCES FRACTIONAL: ±1/16 X.XX: ±.03 X.XXX: ±.015 ANGLE: ±1° DEBURR ALL SHARP EDGES. ALL MACHINED SURFACES TO HAVE A 125 RMS FINISH UNLESS NOTED OTHERWISE.</small>	DRAWN BY:	RJP
	CHECKED BY:	CHL
	PROTOTYPE BY:	RJP
	PROTOTYPE DATE:	10/3/2013
	APPROVED FOR PRODUCTION BY:	CHL
	PRODUCTION DATE:	10/15/2013

SALCO PRODUCTS, INC.		
PART NAME: QUICK CONNECT CAP 4" THREADED		
MATERIAL: 416 SS		
PROJECT #:	SHEET #:	SCALE:
130924FR3	1 OF 1	3:4
DRAWING #:	PART #:	
C37408	TE4S416N62DC3A	

THIS PRINT, PROPERTY OF SALCO PRODUCTS INC., CONTAINS PROPRIETARY INFORMATION AND MUST NOT BE COPIED, REPRODUCED, OR USED DETRIMENTALLY TO OUR INTEREST.

